

# Salisbury Cathedral Events

Autumn – Winter 2009

---



Salisbury  
Cathedral

# SEASON HIGHLIGHTS

## EXHIBITIONS >

Until 31 October, page 4

### TIME TEAM EXHIBITION

Friday 11 September – Sunday  
11 October, page 4

### SACRED AND SECULAR SCULPTURE, PETER EUGENE BALL



Friday 16 October –  
March 2010, page 5

### THE THORNFLOWER, CHARLOTTE MAYER

## ADULT WORKSHOPS AND CHILDREN'S ACTIVITIES >

Thursday 22 October, page 5

### THE BIG DRAW

Monday 21 – Wednesday  
23 December, page 8

### YOUNG AT ART 'All Things Christmassy'



## CONCERTS AND RECITALS >

Wednesday 14 October,  
page 5

### THE EMERY ORGAN RECITAL, CATHERINE ENNIS



Wednesday 11 November, page 6

### REMEMBRANCE DAY CONCERT Salisbury Cathedral Choir by Candlelight

Wednesday 16 December, page 8

### HANDEL'S MESSIAH

## MAJOR SERVICES >

Saturday 28 and  
Sunday 29 November,  
page 7

### ADVENT PROCESSION FROM DARKNESS TO LIGHT



Monday 21 and  
Tuesday 22 December, page 9

### CHRISTMAS PROCESSION – CATHEDRAL CAROL SERVICE

### CHRISTMAS EVE AND CHRISTMAS DAY

Full listing including Family Service, page 9

## SEPTEMBER

Until Saturday 31 October, 10.00am – 6.00pm daily



### TIME TEAM EXHIBITION

Special exhibition in the Cloisters digging deeper into the 2008 archaeological excavation at the Cathedral by Channel 4's Time Team. Admission free.

Until Sunday 11 October, 10.00am – 4.00pm (Mon - Sat),  
1.00pm - 2.30pm (Sun)

### SACRED AND SECULAR SCULPTURE, PETER EUGENE BALL

Exhibition of over 35 sculptures in the Morning Chapel. This is the first time Ball's exquisite work will have been on public view in Salisbury and includes a number of reflective images, several witty conversation pieces and a new Madonna and Child. Ball's individual figurative style makes use of found objects, often wood embellished with metal. Admission free.



## OCTOBER

Friday 9 October, 5.30pm

### PRESENTATION OF ST ALDHELM CROSSES AND INSTALLATION OF NEW BISHOP OF SHERBORNE DURING EVENSONG

Wednesday 14 October, 7.30pm



### THE EMERY ORGAN RECITAL, CATHERINE ENNIS

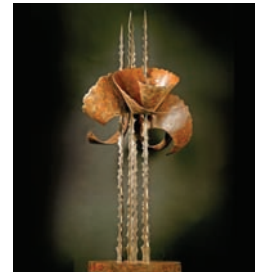
International recitalist, Organist and Director of Music at St Lawrence Jewry, London, performs music by J S Bach, Dupré, Elgar, Mendelssohn, Parry and Ravel. Tickets £8.00 at the door.

Friday 16 October – March 2010, 10.00am – 4.00pm daily

### THE THORNFLOWER, CHARLOTTE MAYER

#### 'A Monument to Peace and Reconciliation'

This beautiful sculpture grew out of Mayer's reflections on the death of her grandmother in Treblinka, and 'man's inhumanity to man at other times'. On display in the Morning Chapel for six months, eight of Mayer's other sculptures will be present until mid November 2009. Admission free.



Tuesday 20th October, 10.00am – 4.00pm

### 'ART FOR ADULTS' WORKSHOP

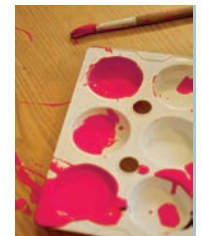
#### Experimenting with Contemporary Watercolours

Exploring the use of watercolours in a contemporary style, led by Swanage-based artist Annie Campbell. Cost £27.50, pre-booking essential, call (01722) 555180.

Thursday 22 October, 11.00am – 4.00pm

### THE BIG DRAW

A themed art activity day 'Painting the Cathedral'. All ages welcome, no experience necessary and materials provided. Free to enter, part of the national 'Big Draw'. Registration in the Cloisters or pre-book (01722) 555180.



Friday 23 October, 7.30pm

## ROYAL ARTILLERY BAND CONCERT

With Director of Music Major Tim Arnold, compere Richard Allinson and Hayley Westenra. In aid of service charities. Tickets £28.00, £10.00, [www.salisburyfestival.co.uk](http://www.salisburyfestival.co.uk)

Friday 30 October, 5.30pm

## AMNESTY INTERNATIONAL ANNUAL SERVICE

This service centres around the lighting of the Amnesty Candle and prayers for those who suffer for conscience sake. Amnesty International regards the cause of those who are unjustly abused because of their religious or political beliefs, or because of their minority status, as an important part of its witness against injustice.



## NOVEMBER

Saturday 7 November, 5.30pm

## LET IT SHINE

### Royal School of Church Music Young Voices Festival

Primary schools and junior church choirs from the Salisbury area join Salisbury Cathedral Junior Choir in a festival service for young singers, devised by the Royal School of Church Music. All welcome. Visit [www.rscm.com](http://www.rscm.com)

Wednesday 11 November, 7.30pm

## REMEMBRANCE DAY CONCERT

### Salisbury Cathedral Choir by Candlelight

A rare opportunity to hear the entire Cathedral Choir – boys, girls and men – in concert in the Cathedral. Programme includes Allegri's Miserere, Frank Martin Mass for Double Choir and the first performance of Harvest Hymn by Jon Simsic, the winning entry in the 2008 RSCM Harold Smart Composition Competition. In aid of Salisbury Cathedral Choral Foundation. Tickets £12.50, £10.00, call (01722) 320333.



Saturday 14 November

## BE A CHORISTER FOR A DAY

Salisbury Cathedral Choir's Annual Open Day for children in school years 2, 3 and 4 and their families. Free but pre-booking essential, call (01722) 555148.



Thursday 26 November, 5.30pm

## CITY LIGHTS SERVICE

The Cathedral's service of readings and carols is followed by the switching on of the City's Christmas lights in the Market Square.

Saturday 28 and Sunday 29 November, 7.00pm

## ADVENT PROCESSION FROM DARKNESS TO LIGHT

One of the most popular services of the liturgical year. A mix of readings, hymns and music sung by the Cathedral Choir, it begins in total darkness and silence as the Advent Candle is lit. By the end, the Cathedral is illuminated by almost 1,300 candles. \*See entry and seating information, page 9.



## DECEMBER

Saturday 5 December, 11am – 12 noon

## VOICE TRIAL WORKSHOP

For prospective Cathedral Choristers in school years 3 and 4. Pre-booking essential. Call (01722) 555148.

Sunday 6 December, 3.00pm

## EVENSONG WITH BOY BISHOP CEREMONY

A celebration of an ancient tradition as the Bishop of Salisbury gives his staff and ring to the Boy Bishop who leads the prayers and gives the sermon. All welcome.

Thursday 10 December, 7.30pm – 9.00pm (seated by 7.00pm)

## **CHRISTMAS CAROL CONCERT WITH BBC WILTSHIRE**

Salisbury Cathedral Choir, Band of the Prince of Wales Regiment, Salisbury Cathedral Junior Choir plus audience participation. Special Carol Concert with Christmas favourites to be recorded by BBC Wiltshire for transmission on 24 – 25 December. Tickets £5.00, call (01722) 320333.

Saturday 12 December, 7.30pm

## **CHORAL CONCERT**

**Salisbury Musical Society**

**Chelsea Opera Group Orchestra**

Conducted by David Halls, Director of Music, Salisbury Cathedral. Beethoven Mass in C and Berlioz Te Deum.

Tickets £15.00, £12.00 (reserved), £6.00 (unreserved), call (01722) 320 333.

Wednesday 16 December, 7.30pm

## **HANDEL'S MESSIAH**

Salisbury Cathedral Choir, Sarum Orchestra and soprano Alison Hill perform Handel's great oratorio Messiah.

Conducted by David Halls, Director of Music, Salisbury Cathedral. In aid of Salisbury Cathedral Choral Foundation.

Tickets £18.00 , £10.00, call (01722) 320333.

Thursday 17 December, 10.00am – 3.00pm



## **'ART FOR ADULTS' WORKSHOP**

**Flower Arranging: Ideas for Christmas**

Led by Chelsea gold medal winner Marilyn Nourse . Pre-booking essential, price £25.00, call (01722) 555180.

Monday 21 – Wednesday 23 December, 10.00am – 12noon

## **YOUNG AT ART**

**'All Things Christmassy'**

Christmas craft workshop for children aged 5 – 12 years in Wren Hall (Cathedral Education Centre). Materials provided, £3.50 per child per session. Pre-booking essential, call (01722) 555180 or email: [education@salcath.co.uk](mailto:education@salcath.co.uk)



Monday 21 and Tuesday 22 December, 7.00pm

## **THE CHRISTMAS PROCESSION**

The Cathedral's much loved carol service.

\*See entry and seating information, below.



Thursday 24 December, 4.00pm

## **A FAMILY SERVICE FOR CHRISTMAS EVE**

Popular service (with a donkey) for families with young children. All welcome.

Thursday 24 December

## **CHRISTMAS EVE**

Morning Worship	7.30am
A Family Service for Christmas Eve	4.00pm
Choral Evensong	5.30pm
The First Eucharist of Christmas	11.30pm

Friday 25 December

## **CHRISTMAS DAY**

Holy Communion	8.00am
Sung Eucharist	10.30am
Festal Evensong	3.00pm

## **\*ENTRY AND SEATING INFORMATION**

Doors open at 6.00pm. These services are not ticketed and all are welcome. No admission once all seats are taken. There is no public parking in The Close. Parking will be made available for Disabled Badge holders entering via the High Street Gate, call (01722) 555125.



## FUTURE DATES FOR YOUR DIARY

Sunday 17 January 2010, 7.00pm

### THE EPIPHANY PROCESSION

Wednesday 31 March 2010, 7.30pm

### BACH ST JOHN PASSION

Salisbury Cathedral Choir, Sarum Orchestra,  
conductor David Halls.

Tickets £18.00 – £10.00, call (01722) 320333.

Good Friday, 2 April 2010, 7.00pm

### THE WAY OF THE CROSS

Churches Together in Salisbury presents a pageant of the  
passion story. Begins in Queen Elizabeth Gardens, stops at  
various venues around the City ending in the Cathedral  
c. 9.30pm. Call (01722) 555125.

Saturday 19 June 2010

### CATHEDRAL OPEN DAY

### 'ART FOR ADULTS' WORKSHOPS

For a full programme of 'Art for Adults' courses in 2010,  
contact the Cathedral Education Centre on (01722) 555180.

## WEEKLY SERVICE SCHEDULE

### MONDAY TO SATURDAY

- 7.30am Morning Worship with Holy Communion
- 5.30pm Choral Evensong  
(occasionally Eucharist or Evening Prayer)
- 11.15am Holy Communion (Thursdays only)
- 12.15pm Holy Communion (Tuesdays only)

### SUNDAY

- 8.00am Holy Communion
- 9.15am Mattins
- 10.30am Sung Eucharist
- 3.00pm Choral Evensong



## LISTEN TO THE CATHEDRAL CHOIR

The Cathedral Choir rehearses in the Quire of the Cathedral  
between 4.30pm and 5.10pm on most Wednesdays and  
Saturdays during school term time. All welcome.

## SUNDAY AFTERNOON ORGAN RECITALS, 2.30PM

Organ Recitals are given every Sunday afternoon during  
school term-time (before Evensong at 3.00pm) by either the  
Assistant Director of Music or the Organ Scholar.  
All welcome.

---

## **OPENING TIMES**

7.15am – 6.15pm (Monday – Saturday), 12.30pm – 2.30pm and 4.00pm – 6.15pm (recommended times on Sundays).

Please note: Opening times may vary at short notice.

Information within this booklet is correct at the time of going to press. Please visit the Cathedral's website for the latest information.

---

## **GIFT SHOP AND REFECTORY**

Open daily 9.30am – 5.30pm (except Christmas Day).

---

## **RECOMMENDED DONATIONS**

Adults £5.00, children £3.00, seniors and students £4.25 and family (2 adults, 3 children) £12.00. Group rates available.

---

## **INCLUSIVE TOWER TOUR PACKAGES AVAILABLE**

Adults £8.00 (01722) 555156

---

## **STAY INFORMED**

Send your email address to [newsletter@salcath.co.uk](mailto:newsletter@salcath.co.uk) and be kept up to date with the latest news and event information from Salisbury Cathedral.

---



Salisbury Cathedral  
Visitor Services  
33 The Close  
Salisbury  
Wiltshire SP1 2EJ  
**T: 01722 555120**

**E: [visitors@salcath.co.uk](mailto:visitors@salcath.co.uk)**  
**[www.salisburycathedral.org.uk](http://www.salisburycathedral.org.uk)**